

Winner

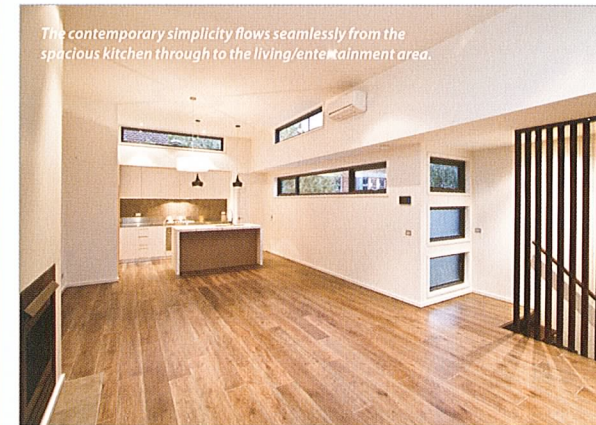
RESIDENTIAL DESIGN –
MULTI-RESIDENTIAL: DUAL OCCUPANCY



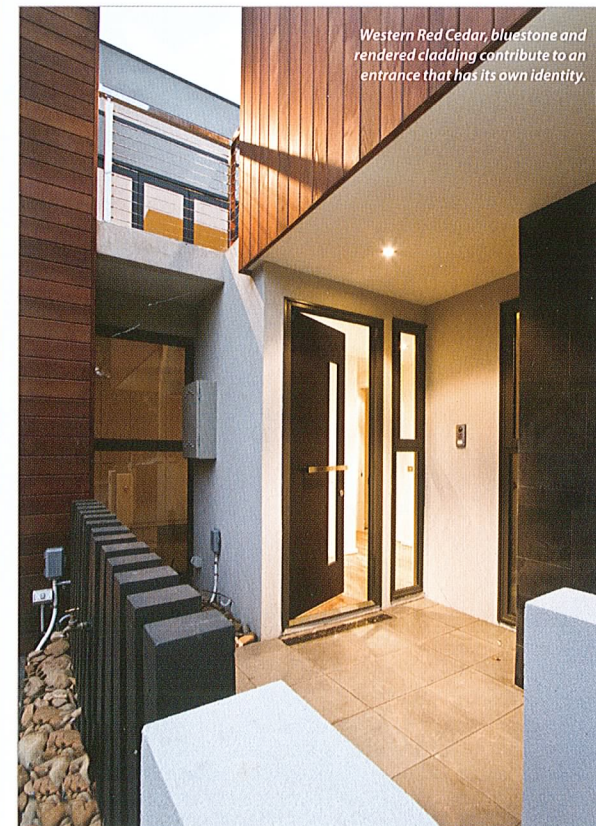
Private mid-level solar lap pool complements the spacious living/dining relaxation zone.



Rustic sustainable materials of timber and steel highlight the architectural form.



The contemporary simplicity flows seamlessly from the spacious kitchen through to the living/entertainment area.



Western Red Cedar, bluestone and rendered cladding contribute to an entrance that has its own identity.

Designer: Peter Searle Design
Phone: (03) 9819 7010
Web: www.petersearle.com.au
Builder: Mark Hassall, MC Building & Construction Pty Ltd
Photographer: Loren Mitchell

Fitzroy Townhouses

This site in Fitzroy, surrounded by a variety of historically significant early Victorian buildings, provides substantial contextual challenges for a modern infill development

The winning dual-occupancy has maximised the opportunity presented by the site, yet ensured that the new dwellings are respectful of the surrounding structures and sensitive interfaces. The clever layout has solved the need for four cars to be parked on site, protected abutting sensitive secluded private open space areas (at ground and first floors), intelligently included buffers to neighbouring noise sources and provided occupants with a high level of internal and external amenity.

The 'timber box' façade, extruded window frames and pop-up clerestory roof windows provide a striking yet well placed form within this old Melbourne context. The careful selection of rustic materials reflects the colours and tones of surrounding bluestone right-of-way, red brick and timber present throughout the streetscape.

Overall, the result is a beautifully presented and designed modern dual-occupancy that sits well within its historically significant surrounds.